

---

# VENETIANS

C80, Z70, Z90, S90

**TECHNICAL BOOK**



2909a Wisemans Ferry Road  
Mangrove Mountain NSW 2250  
Sydney-Australia

t: +61 2 4374 1434  
m: +61 430 777 779  
info@mysunshades.com.au

# 1. Product description

## Venetians

High quality venetian blinds in different traditional and innovative slat shapes. Most venetians come in two versions: with guiding rails or cables. Guide rails provide better stability while units with cables allow more compact setup and reduce the number of obstructions. Guide rails are used as a load bearing element of the whole system.

- C80 blind has ~80mm slats in traditional C-shape and rounded edges for improved rigidity.
- Z70 and Z90 have Z-shaped slats ~70 and ~90mm wide respectively. This special shape allows smooth regulation of light intensity from simple glare reduction up to almost complete blackout. All slats have an incorporated sealing which allows noise-free operation.
- S90 has all advantages of C and Z-shaped venetians, and also is the sturdiest of them all.



### Technical Data

#### Width and projection

Width of \*40 to 450cm  
Projection 40 to 450cm  
*\* 60cm with electric drive*

#### Frame colour

Silver (RAL 9006)  
Anthracite (DB 703)  
Other colours on request

#### Slats size

70mm (Z), 80mm (C) and 90mm (S, Z) wide

#### Frame colour

Silver (RAL 9006)  
Anthracite (DB 703)  
Other colours on request

### Control

#### Manual crank

Fixed or removable crank.

#### Electric motor

With electronic torque control and thermal protection. Optional: electric motor with integrated radio receiver and transmitter

### Mounting

#### Possible mounting

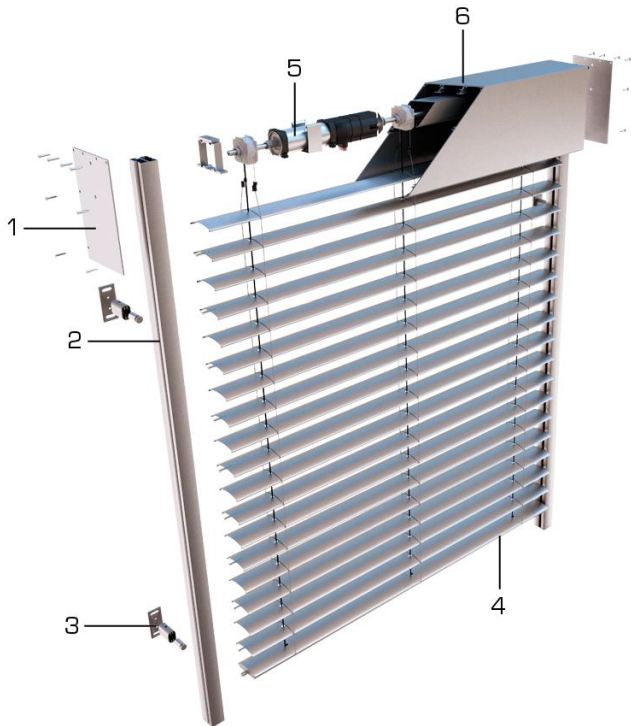
External. Wall or window frame.  
Cassette fixed in a recess or supported on side channels

### Multiple units

#### Coupling

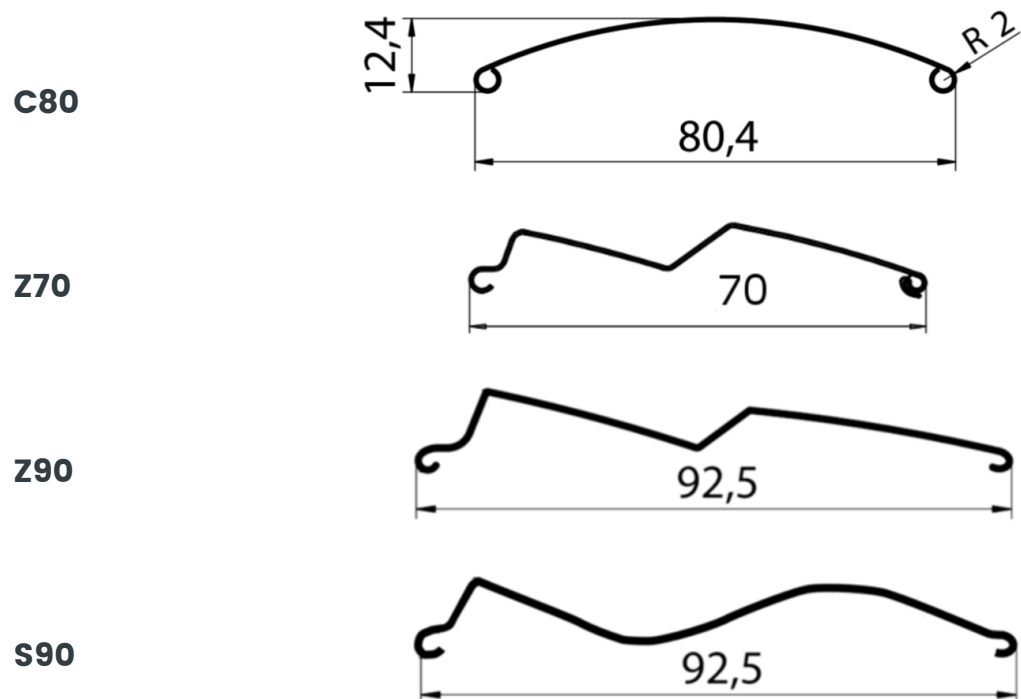
Possible for up to 3 units driven by one electric motor.

### C80 with square rail guides and rectangular cassette (CUBE)



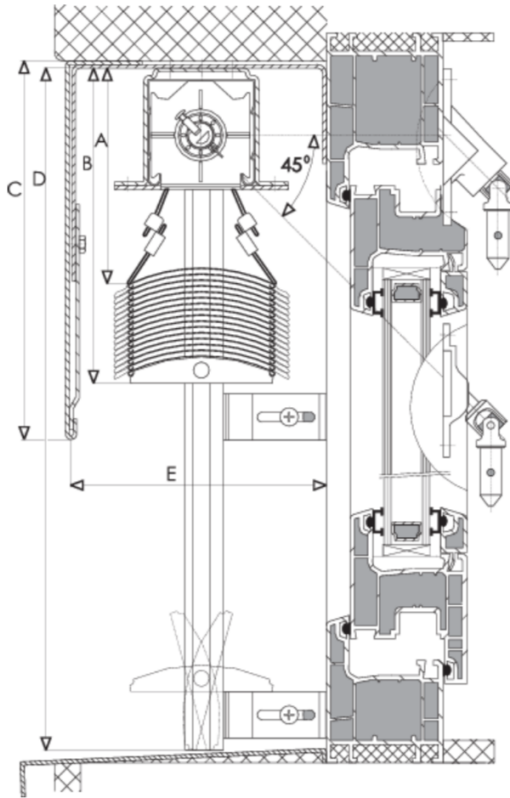
- 1. End cap
- 2. Guide rail
- 3. Bracket
- 4. Slats
- 5. Motor
- 6. Cassette

### Slats cross-sections

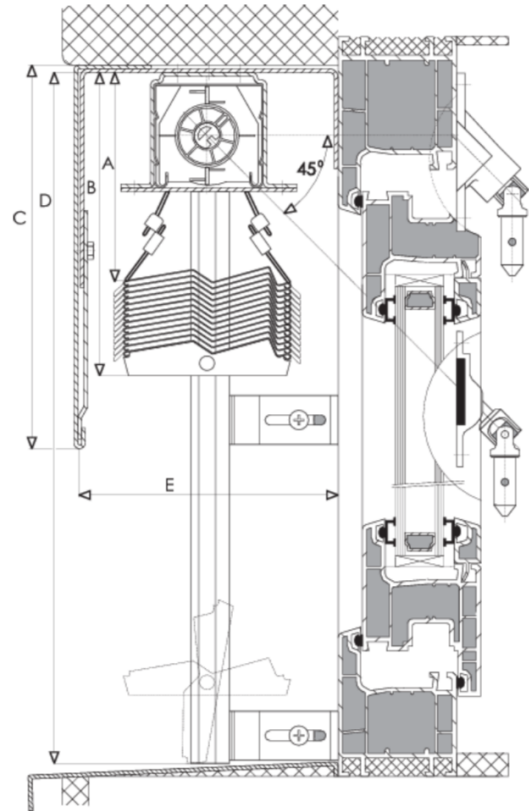


# 3. Technical data - faceplate setup Venetians

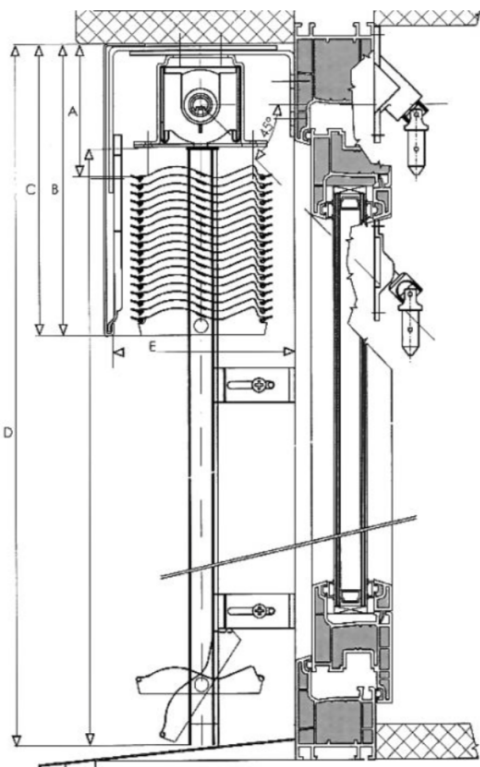
C80



Z70/Z90



S90



- A – distance to the first slat  
16-24cm**
- B – height of fully retracted  
unit (varies depending on the  
number of slats)**
- C – height of the cassette  
(varies depending on the  
number of slats)**
- D – Total height (up to 4m)**
- E – Depth of the unit (depends  
on chosen slats; 13cm  
recommended)**

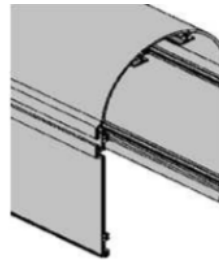
# 4. Cassettes and guides

## CUBE



Rectangular cassette made of extruded aluminium for external installation. Comes with removable inspection cover. Cassette installed on the side channels in a self-supporting system. Can be extended to house and conceal larger amount of slats.

## ROUNDED

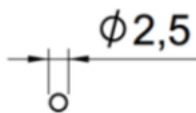


Cassette made of extruded aluminium with round top side for external installation. Comes with removable inspection cover. Cassette installed on the side channels in a self-supporting system. Can be extended to house and conceal larger amount of slats.

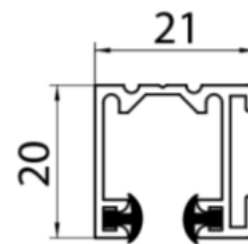
## Face plate only

For installation concealed within a recess.

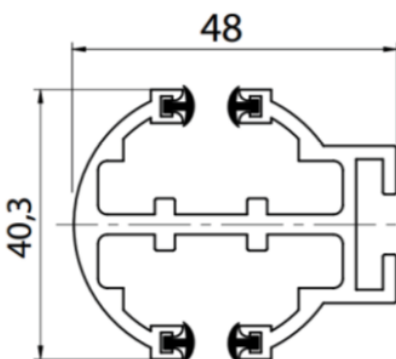
## Guides



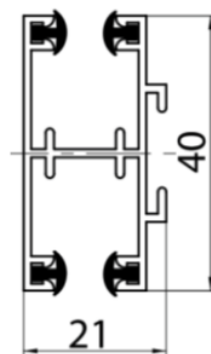
Cable guide



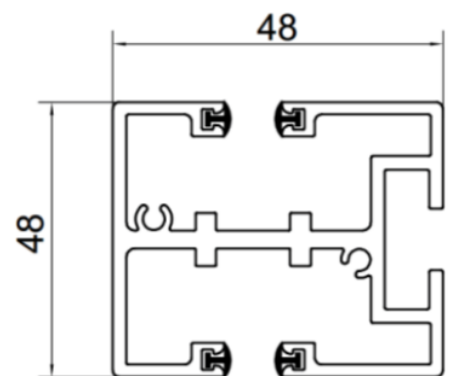
Single square guide rail



Double round guide rail



Double rectangular guide rail



Double square guide rail  
CUBE cassette only

## Description Overview

High quality venetian blinds in different traditional and innovative slat shapes. Most venetians come in two versions: with guiding rails or cables. Guiding rails provide better stability while units with cables allow more compact setup and reduce the number of obstructions.

- C80 blind has ~80mm slats in traditional C-shape.
- Z70 and Z90 have Z-shaped slats ~70 and ~90mm wide respectively. This special shape allows smooth regulation of light intensity from simple glare reduction up to almost complete blackout. All slats have an incorporated sealing which allows noise-free operation.
- S90 has all advantages of C and Z-shaped venetians, and also is the sturdiest of them all.

**Dimensions** Width of 40 cm to 450 cm (min. 60mm with electric drive).  
Projection 40 to 450cm.

**Guide rails** Multiple options depending on the setup and clients preferences:

- Ø2,5mm stainless steel cable guide
- 20x21mm single, extruded aluminium profiles for smaller, single units
- 40,3x48mm double, round, extruded aluminium profile, which goes best in set with rounded cassette
- 40x21mm double, extruded aluminium profile for smaller, multiple, side-by-side units.
- 48x48mm double, extruded aluminium profile for best stability and biggest possible configurations with many units.

## Operation

**Manual** Fixed or removable crank in different lengths.

**Electric** Maintenance free electric engine incorporated inside the roller tube with adjustable end position and thermal protection. Make: ELERO or equivalent. Alternative: same as above but with integrated radio receiver and remote controls. Make: Somfy or equivalent

**Coupled systems** Up to three units with one electric drive (2 on each side).

**Frame colour** Silver (RAL 9006)  
Anthracite (DB 703)  
Other colours on request

**Slats** Powder-coated aluminium profiles with 0,42mm thickness

**Product origin** Europe