
THE SB 210

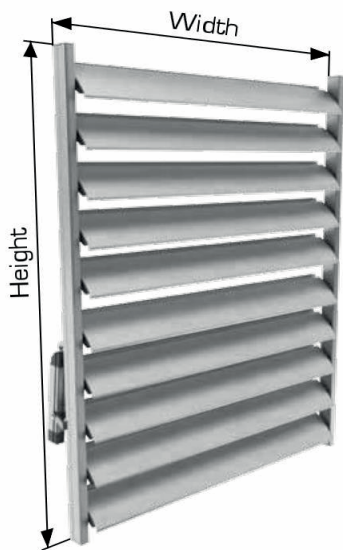
TECHNICAL BOOK



2909a Wisemans Ferry Road
Mangrove Mountain NSW 2250
Sydney-Australia

t: +61 2 4374 1434
m: +61 430 777 779
info@mysunshades.com.au

The SB 210 system is a highly efficient external shading system, which can also serve as a decorative part of the building. The blades and guide rails are made of thin-walled extruded aluminium, which makes the whole construction lightweight, yet durable. Sunbreaker is a mobile system with a blade rotation range from 0 to 90 degrees; it can be fixed both horizontally and vertically. Sunbreaker is a perfect way of making a building more architecturally attractive and for reducing energy consumption from air conditioning.



Technical Data

Width and projection	Width up to 400cm Height up to 602cm
-----------------------------	---

Colour	Silver Anodised Other colours on request
---------------	---

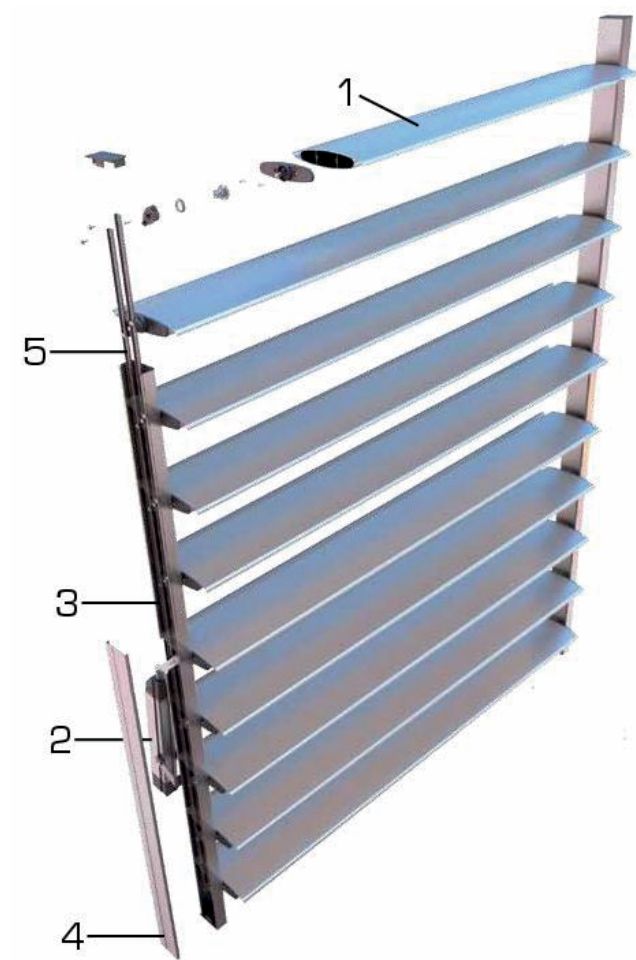


Control	Manual handle with locking function
Manual	



Electric motor	Linear motor with electronic torque control and thermal protection. Optional: electric motor with integrated radio receiver and transmitter
-----------------------	--

Mounting	External. Blades and the whole unit can go vertical and horizontal
Possible mounting	



1. Blade

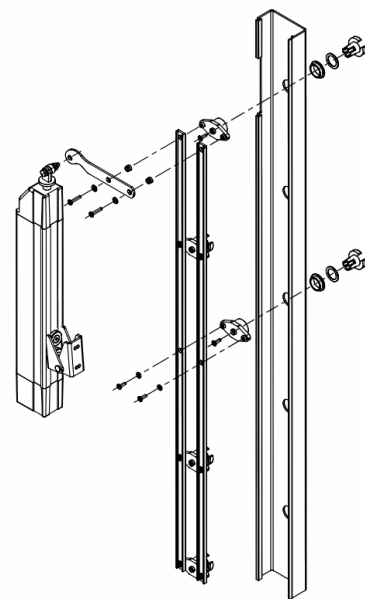
2. Motor

3. Guide rail

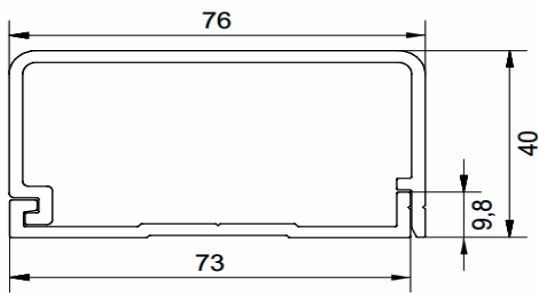
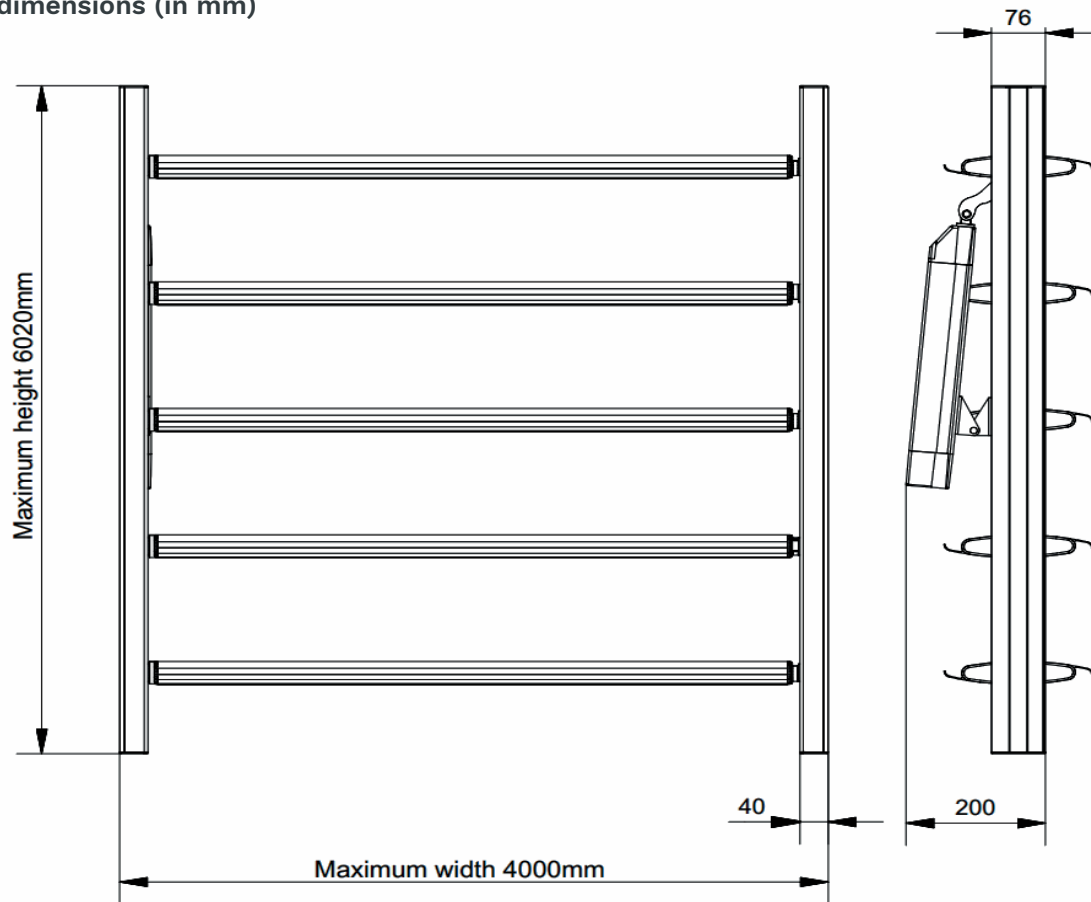
4. Cover

5. Blade rotating mechanism

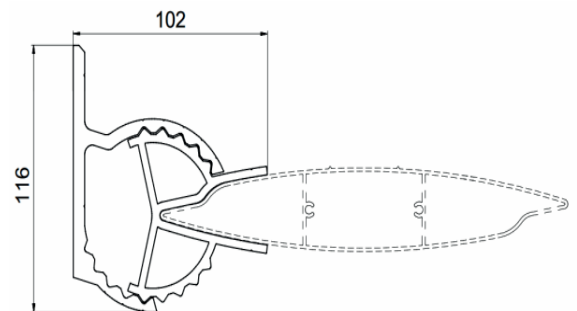
Guide rail and motor assembly



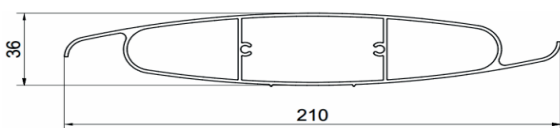
General dimensions (in mm)



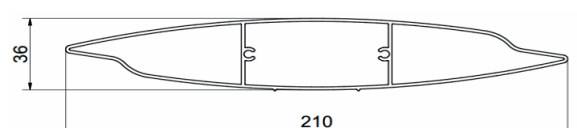
Guide rail



Fixed angle system (type B blades only)



Blade type A



Blade type B

Description Overview

The Sunbreaker system is a highly efficient external shading system, which can also serve as a decorative part of the building. The blades and guide rails are made of thin-walled extruded aluminium, which makes the whole construction lightweight, yet durable.

Sunbreaker is a mobile system with a blade rotation range from 0 to 90 degrees; it can be fixed both horizontally and vertically. Sunbreaker is a perfect way of making a building more architecturally attractive and for reducing energy consumption from air conditioning

Dimensions Width up to 400cm
 Height up to 602cm

Guides - 40x76mm extruded aluminium profile.

Operation

Fixed Fixed assembly possible with B blades and special brackets

Electric Maintenance free electric motor with thermal protection.
 Make: Minardi or equivalent.
 Alternative: same as above but with integrated radio receiver and remote controls. Make: Minardi or equivalent

Colour Silver Anodised
 Other colours on request

Blades **Type A:** blades are designed for horizontal surfaces (roofing, skylights). Owing to the special shape of the blade when in the closed position, it provides protection from rain.

Type B: blades are designed for shielding horizontal and vertical surfaces (building façades, pergola walls). Owing to its shape, the blades provide aesthetic protection from the sun, and add value to the building.

Product origin Europe